

# 180 Corridor Coalition 2011 NDOT DII Update



Mike Fuess, PE, PTOE (NDOT)  
Thor Dyson, PE, CPM (NDOT)





Caltrans Turning Trucks at Exit 1

02/03/08



# Tow Plow

- In the process of acquiring 2 tow plows for Northern Nevada
- Effort lead by the DIII District Engineer
- Department purchase estimated to save \$55/hour of use

# UDOT Tow Plow



# Corrosion Inhibitor

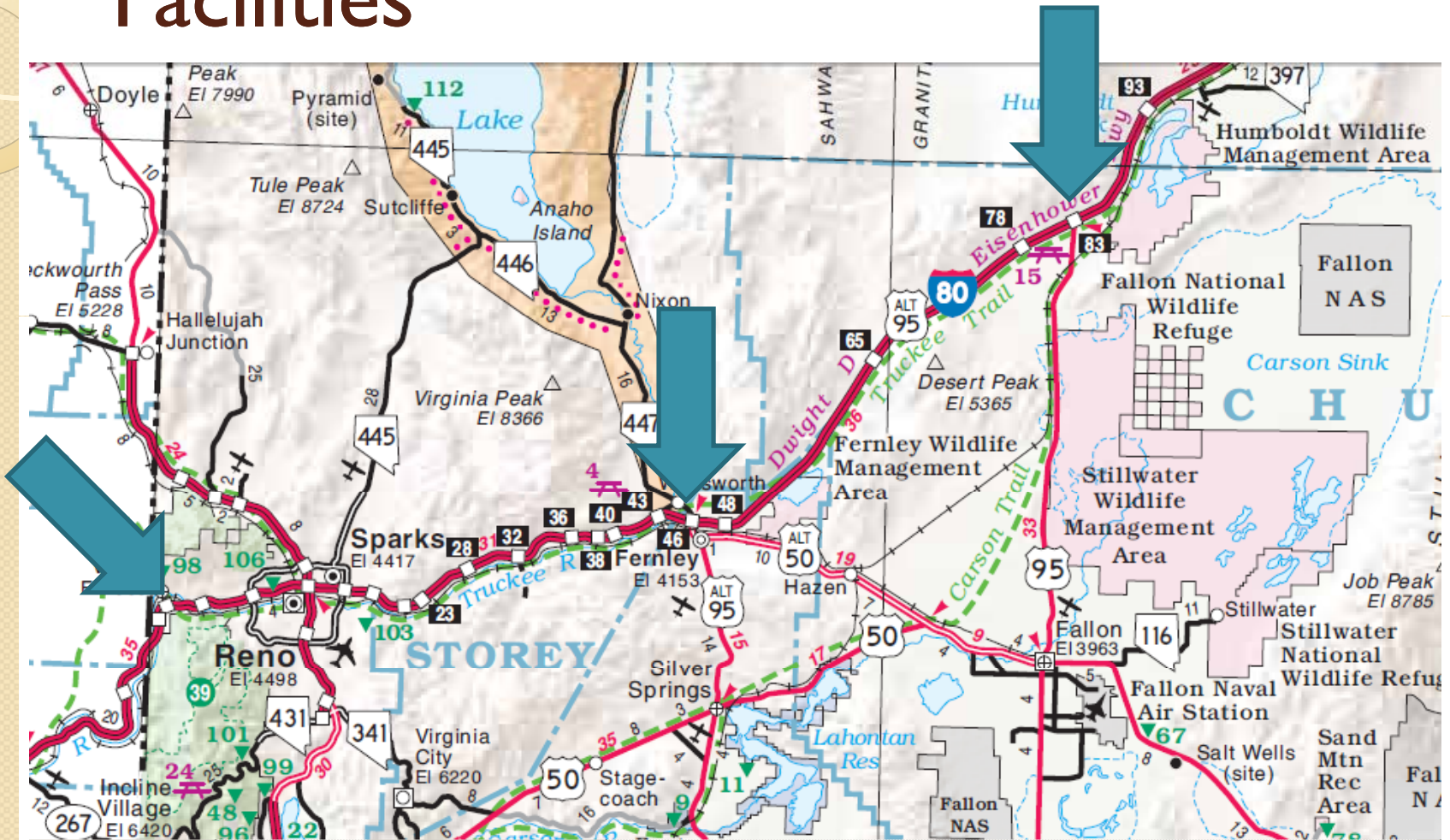
- In research stages
- Add to brine and possibly salt
- Early stages and no firm decisions to date
- So far this effort is showing promise



# Expanded Brine Production

- CMAQ 100% reimbursable funds
  - 5 sweepers (Washoe County)
  - 2 x 10,000 gallon brine tanks
  - new automatic brine manufacturing system
- Expanded brine production allows to strategically place brine tanks in outlying areas

# Proposed Leased Truck Parking Facilities





# Regional & Interstate Coordination

- Reno metro area annual preseason meeting
- Caltrans annual preseason meeting
- Pre-event interstate conference call
- Post event conference call for debrief

# NNROC

- Staffed 24/7
- ITS
- Dispatch
- Inter/Intra agency coordination





# New ITS Devices

- I80 cameras
- I80 flow detectors
- I80 ramp meters
- I80 HAR on I430AM in downtown Reno
- I80 travel times
- Trinity cameras/flow detectors
- DII ITS map
- NDOT RWIS web site
- NDOT video to web

# 180 Design Build Project

- Pavement Reconstruction Keystone to 4<sup>th</sup>
- Full ITS deployment from Robb to Vista
- New overhead signs
- New auxiliary lanes
- Emphasis on contractor innovation

# NDOT/NHP strategy for Truck Management

| Level | Anticipated Closure Duration $t$ (hrs) | Activate NDOT ITS Devices         |                              |   |                       | Nevada Truck Restrictions on I80 east of Reno |
|-------|--|-----------------------------------|------------------------------|---|-----------------------|---|
|       |  | Permanent DMSs                    | Portable DMSs                | Activate Solar Flashers                 | Lovelock Portable HAR |   |
| I     | $t < 3$                                | Winnemucca                        | Lovelock; Trinity; Wadsworth | Warning ~ California Truck Restrictions | Caltrans message      | No  |
| II    | $3 \leq t < 6$                         | Elko, Winnemucca                  | Lovelock; Trinity; Wadsworth | Warning ~ California Truck Restrictions | Caltrans message      | No  |
| III   | $6 \leq t < 12$                        | Wendover, Wells, Elko, Winnemucca | Lovelock; Trinity; Wadsworth | Warning ~ California Truck Restrictions | Caltrans message      | No  |
| IV    | $12 \leq t < 24$                       | Wendover, Wells, Elko, Winnemucca | Lovelock; Trinity; Wadsworth | Regulatory ~ Nevada Truck Restrictions  | NDOT message          | Yes   |
| V     | $t \geq 24$                            | Wendover, Wells, Elko, Winnemucca | Lovelock; Trinity; Wadsworth | Regulatory ~ Nevada Truck Restrictions  | NDOT message          | Yes   |





Devi

Quick search:

RENO DISTRICT

- Cameras
- I580 @ Glendale North
- I580 @ JCT I80
- I580 @ Kietzke S. Virginia
- I580 @ Kietzke South
- I580 @ Moana North
- I580 @ N of Neil North
- I580 @ Peckham North
- I580 @ Plumb Airport Ramps South
- I580 @ S of Mill
- I580 @ S of

Google Map

Map Satellite Traffic

Map data © 2011 Google - Terms of Use

Video

A newer version of the ActiveX (1.5.272.0) is available. Please download and install it from [this location](#).

Currently installed version is 1.5.266.0

Video

A newer version of the ActiveX (1.5.272.0) is available. Please download and install it from [this location](#).

Currently installed version is 1.5.266.0

# RWIS Web Site

Station Listing  [Return to Station List](#)

## Latest Readings

Date / Time: 9/22/2011 6:48:00 PM

Wind Speed: **8.51 mph**

Wind Direction: **88 from the E**

Wind Gust Speed: **15.46 mph**

Wind Gust Direction: **154 from the SE**

Air Temperature: **83.80 °F**

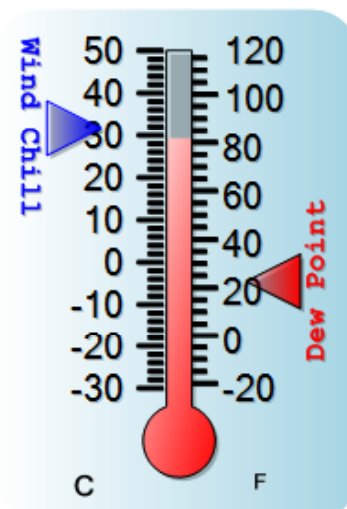
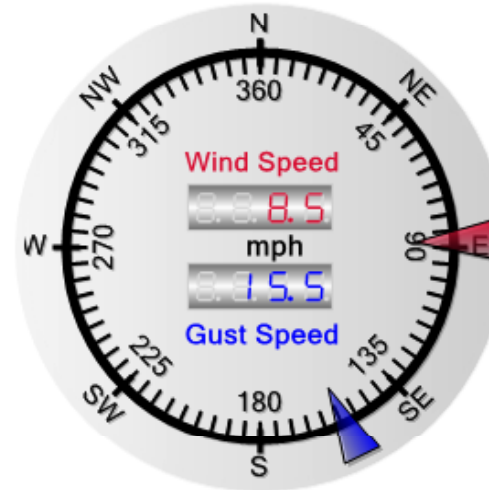
Relative Humidity: **11 %**

Dew Point: **24.60 °F**

Is it Raining?:

Rain Rate: **0 in/hr**

Wind Chill: **87.93 °F**



# Questions?

---



# Contact Info

- Thor Dyson, PE, CPM
  - District Engineer  
775.834.8300  
[tdyson@dot.state.nv.us](mailto:tdyson@dot.state.nv.us)
- 
- Mike Fuess, PE, PTOE
  - District Traffic Engineer  
775.834.8300  
[mfuess@dot.state.nv.us](mailto:mfuess@dot.state.nv.us)
- John Talbott
  - NNROC Supervisor  
775.834.8365  
[jtalbott@dot.state.nv.us](mailto:jtalbott@dot.state.nv.us)